



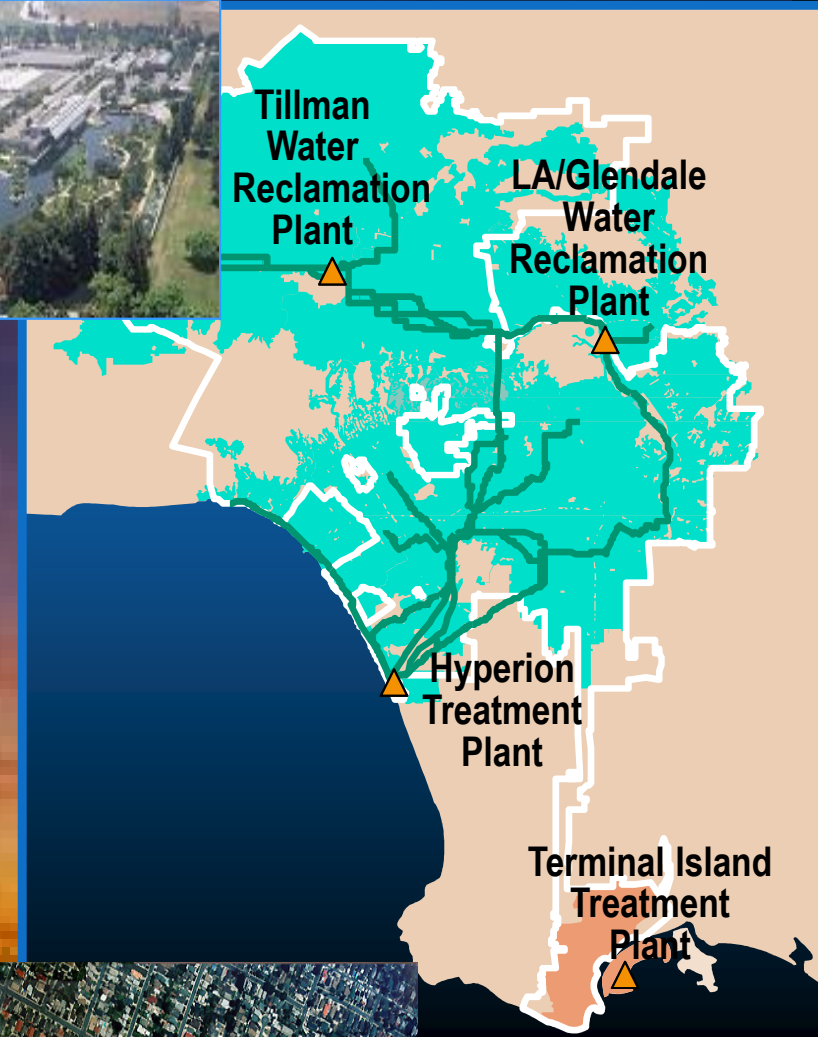
Biogas Management: City's Leadership in Controlling the [Bio]Methane

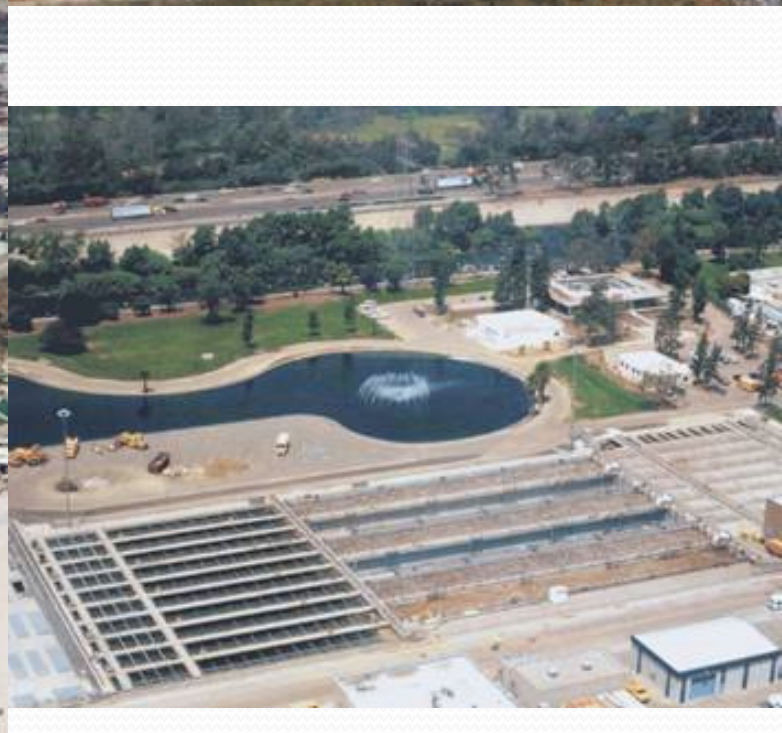
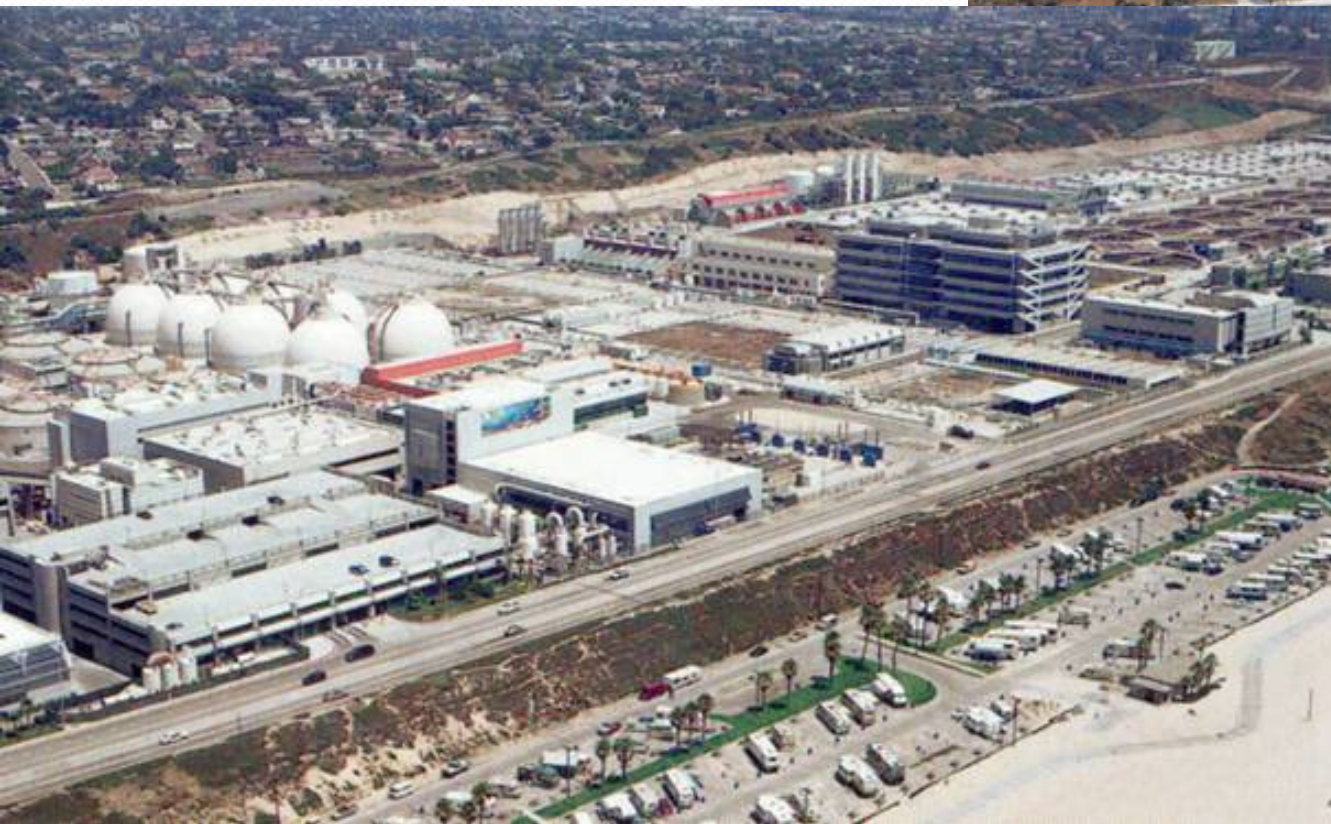
Methane Symposium
March 12th, 2015



Wastewater Program

- Conveys and treats 550 MGD
- Operates four treatment plants
- Serves 29 contract agencies
- Maintains 6,700 miles of sewers
- Operates 47 wastewater pumping plants
- Administers pretreatment program for over 12,000 industrial users



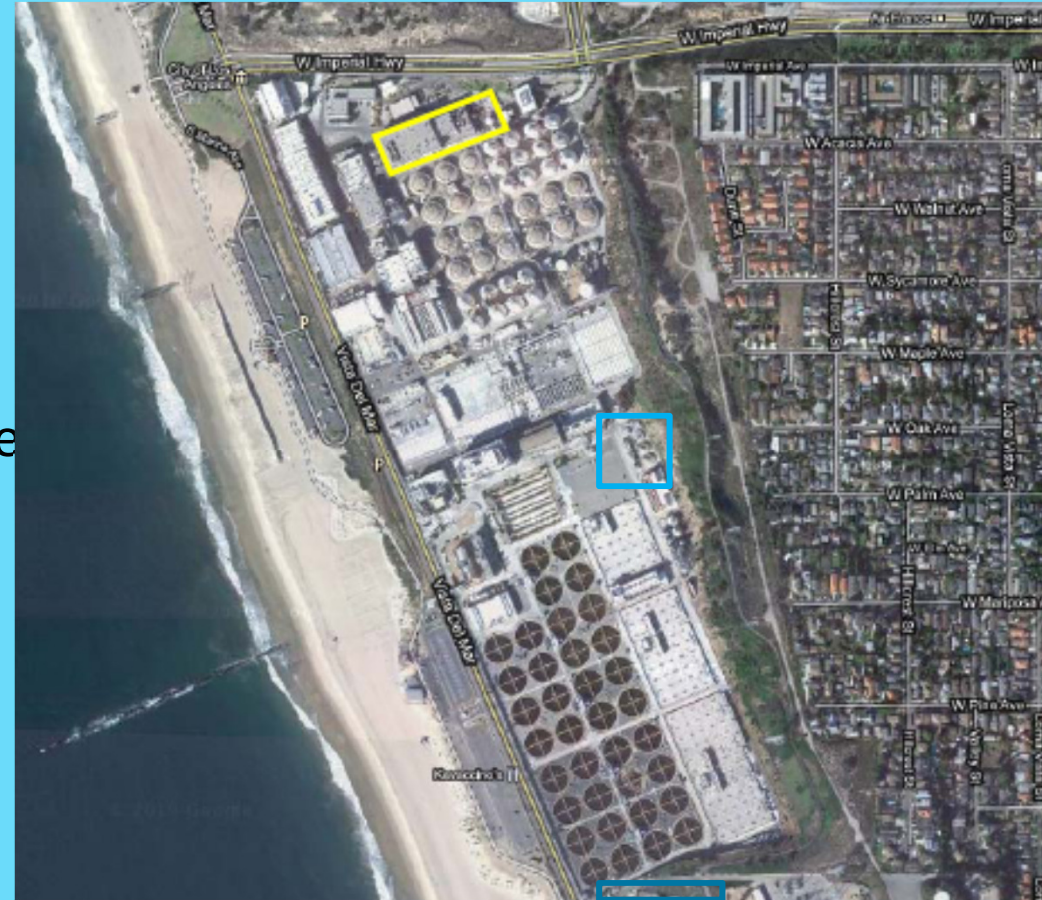






Hyperion Treatment Plant

- Owned and operated by LA SAN
- Treats over 300 MGD
- **Produces digester gas (digas)**
 - **Today: 7.2MMscf/day**
 - **Future: 9.6MMscf/day**
- Current: Scattergood; Energy Exchange
Future: DGUP 42 MW



- Digas is a renewable fuel and is beneficially used for generating electricity and steam for its operations

CITY'S BIOSOLIDS PROCESS



STABILIZATION



DEWATERING



TRUCK TRANSPORT



**BIOSOLIDS SPREADING
& INCORPORATION**



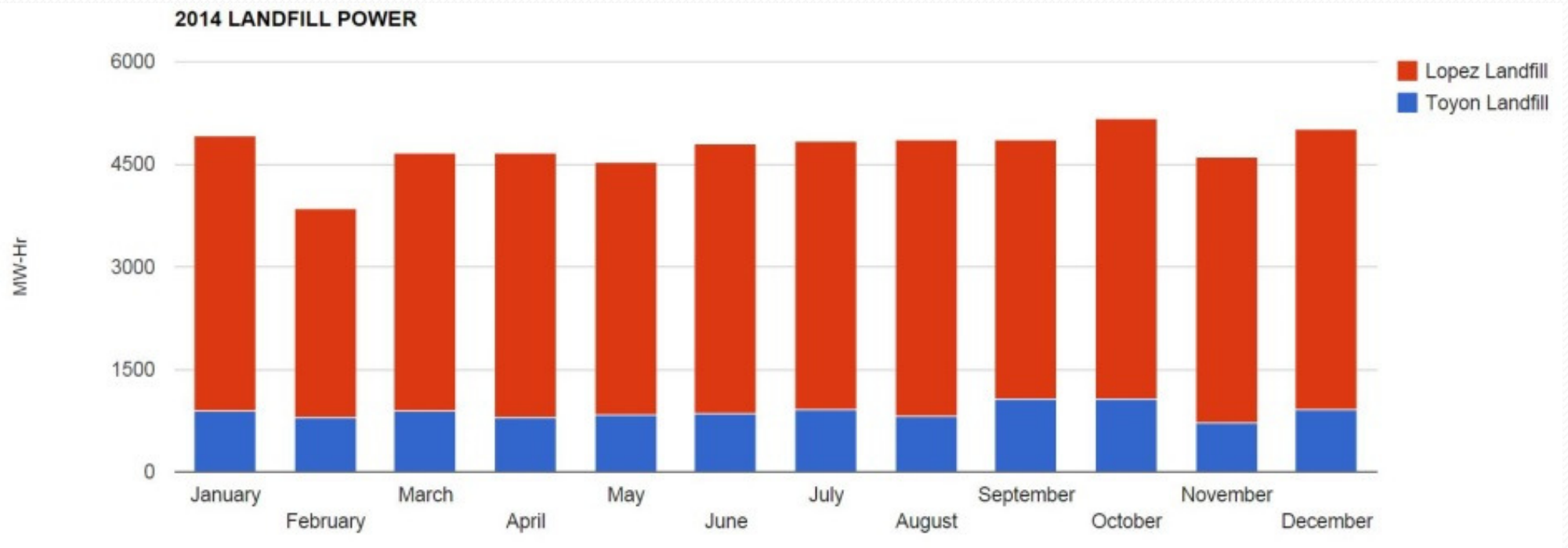
FIELD OF WHEAT



HARVESTING CROP







Lopez Landfill: 2.9M SCFD (standard cubic feet per day)

Toyon Landfill: 1.0M SCFD @ 50% CH₄

Figure 7. Districts Energy Production and Sales, January 2014

Los Angeles County Sanitation Districts Energy Production and Sales



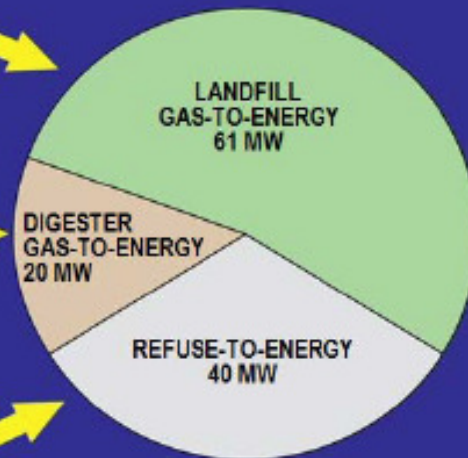
SOLID WASTE FACILITIES



WASTEWATER MANAGEMENT



REFUSE-TO-ENERGY



92 MW

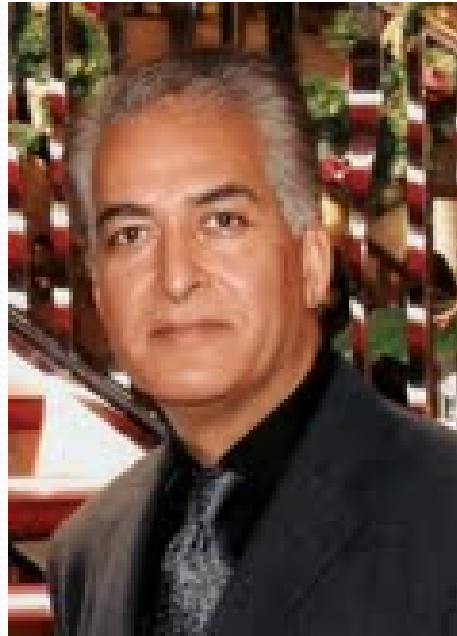
29 MW



POWER SALES



CSD FACILITIES
(Total usage 36 MW)



H.R. Moghaddam
Division Manager,
Regulatory Affairs Division,
City of Los Angeles Bureau
of Sanitation